

Configuring STMS for Mini SAP

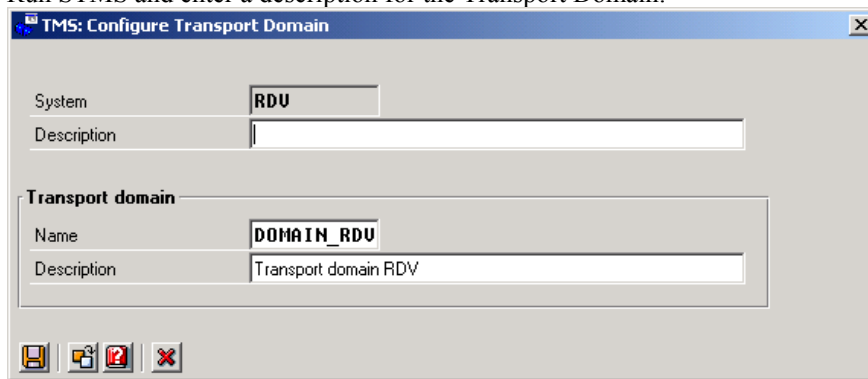
You need to first define one system as the Transport Domain Controller. Then, you can add one or more systems to it to be able to move transports.

Here are the steps to configure the Transport Domain Controller:

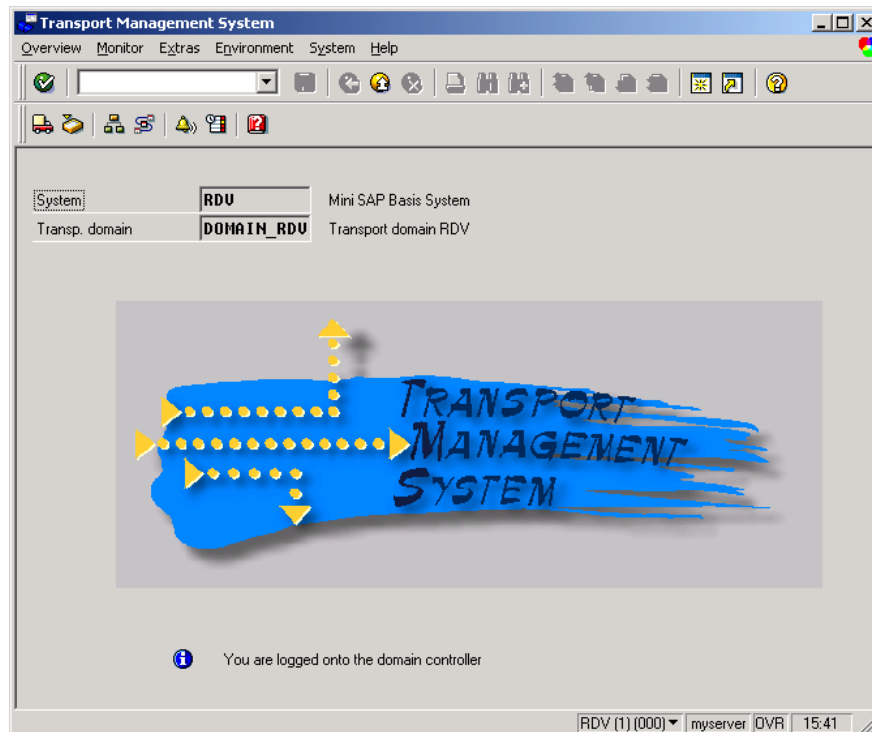
1. Add a Background (BTC) work process to the instance profile:

```
rdisp/wp_no_btc = 1
```

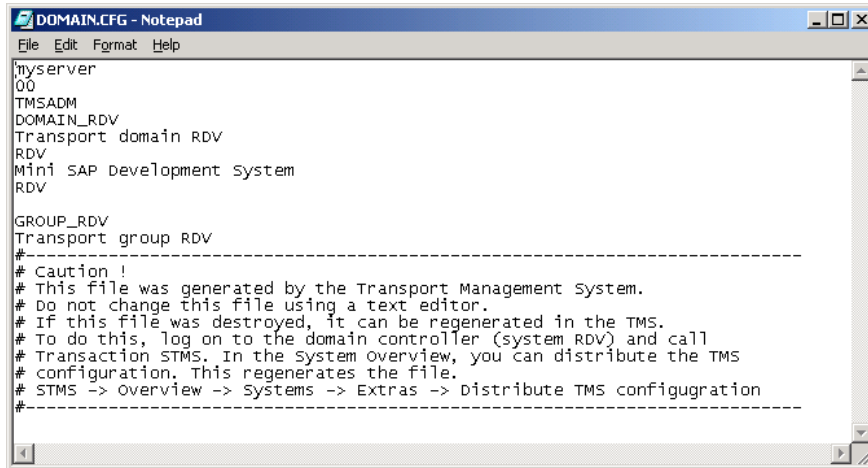
2. Log on as DDIC (password "minisap").
3. Run report "RDDNEWPP" via SE38.
4. Run STMS and enter a description for the Transport Domain:



Once you have completed these steps you will see that the Transport Domain System is configured.

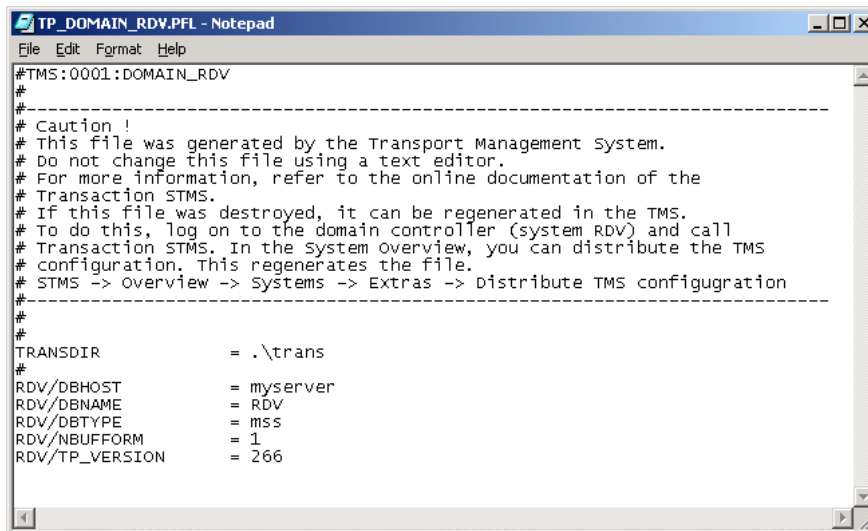


Also, the files DOMAIN.CFG and TP_DOMAIN_<SID>.PFL will be created under the \trans\bin directory:



```
DOMAIN.CFG - Notepad
File Edit Format Help
myserver
00
TMSADM
DOMAIN_RDV
Transport domain RDV
RDV
Mini SAP Development System
RDV

GROUP_RDV
Transport group RDV
#-----
# Caution !
# This file was generated by the Transport Management System.
# Do not change this file using a text editor.
# If this file was destroyed, it can be regenerated in the TMS.
# To do this, log on to the domain controller (system RDV) and call
# Transaction STMS. In the system overview, you can distribute the TMS
# configuration. This regenerates the file.
# STMS -> Overview -> Systems -> Extras -> Distribute TMS configuration
#-----
```



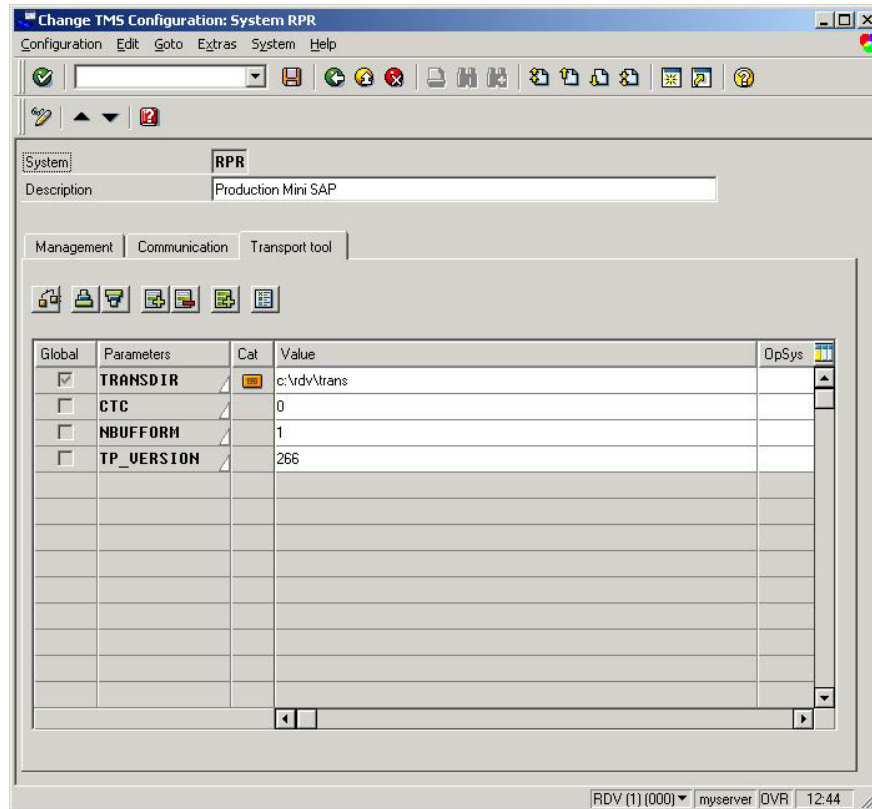
```
TP_DOMAIN_RDV.PFL - Notepad
File Edit Format Help
#TMS:0001:DOMAIN_RDV
#
#-----
# Caution !
# This file was generated by the Transport Management System.
# Do not change this file using a text editor.
# For more information, refer to the online documentation of the
# Transaction STMS.
# If this file was destroyed, it can be regenerated in the TMS.
# To do this, log on to the domain controller (system RDV) and call
# Transaction STMS. In the system overview, you can distribute the TMS
# configuration. This regenerates the file.
# STMS -> Overview -> Systems -> Extras -> Distribute TMS configuration
#-----
#
#
TRANSDIR          = .\trans
#
RDV/DBHOST        = myserver
RDV/DBNAME        = RDV
RDV/DBTYPE        = mss
RDV/NBUFFORM      = 1
RDV/TP_VERSION    = 266
```

Adding another system to the Transport Domain Controller

The steps are slightly different to include a new system in the TMS domain:

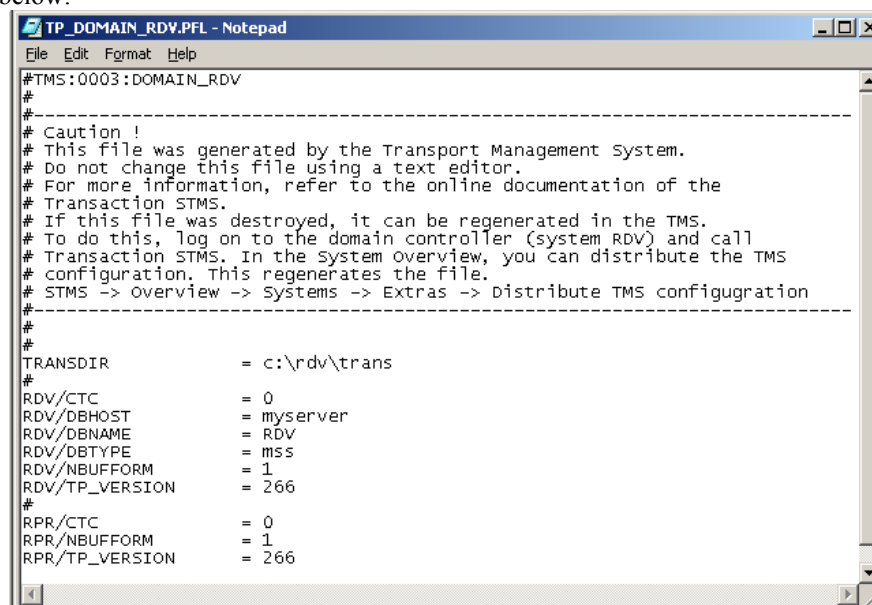
1. Add a Background (BTC) work process to the instance profile:
2. `rdisp/wp_no_btc = 1`
3. Log on as DDIC (password “minisap”).
4. Run report “RDDNEWPP” via SE38.
5. Run STMS and specify the hostname of the Domain Controller. This way the system will wait to be included in the domain controller.

6. Log on to the Transport Domain Controller and include the new system.
7. Make sure that the TRANSDIR parameter is set correctly in the TMS configuration. Remember to save the changes.

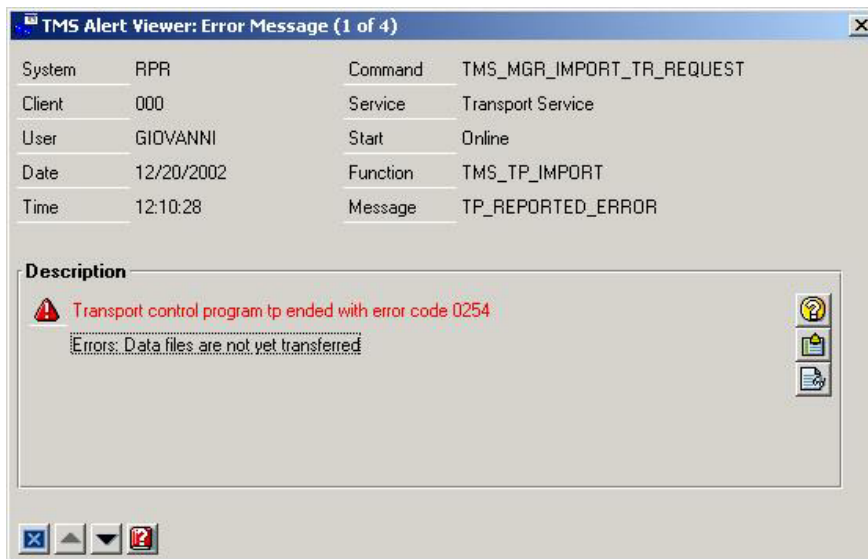


Once you have set this up, the TP_DOMAIN_<SID>.PFL transport profile will be adjusted automatically.

See sample below:



If the parameters are not correct, you will run into problems when trying to import transports.
The following is a common problem:



Again, make sure that the parameters are all correct and that the path to the transport profile is set it up correctly.